

//  
//

( )

\*

) SPSS

(  
/ ± /

(% / ) (% / )  
( % / ) (% / )  
(P < / )  
(r = / P < / )

(.)

%

(.)

%

.()

()

( ) ( ) ( )

.()

/

.()

.()

.()

.()

% (% )

( )

(%)
( / )
( / )
( / )
( / )
( / )
( / )

%

%

%

%

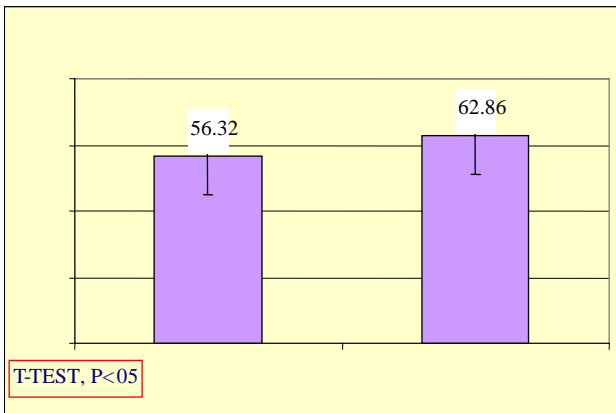
%

)

SPSS 10

(

P < /



(% / )

/ ± /  
 (% )  
 / ± /

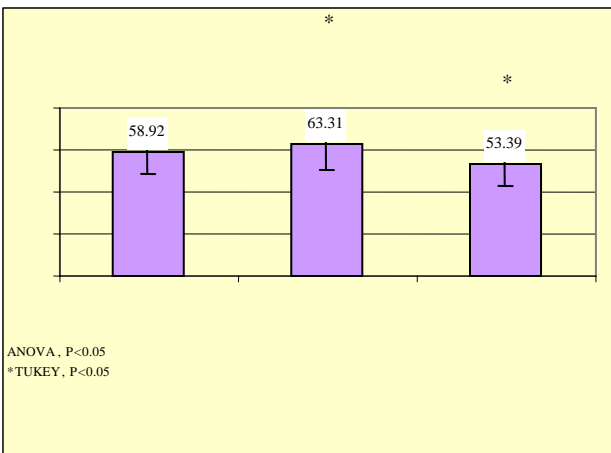
(% / )

(% / )

(% / )

(% / )

(% / )



( )

( ) (P < / )

P < / )

( r = / )

( )

( )

( )

( )

( )

( )

( )

( )

( )

( % / )

( )

( )

( )

( )

( )

( )



- 
16. Osborne S. Influences on compliance with standard precautions among operating room nurses. *Am J Infect Control* 2003; 31(7): 415-23.
  17. Regina CH, Alexander M, Chan E, Chan V. Nurse's knowledge of and compliance with universal precaution in an acute care hospital. *Int J Nurs Stud* 2002; 39(2): 157-63.
  18. Ji G, Yin H, Chen Y. Prevalence of and risk factors for non – compliance with glove utilization and hand hygiene among obstetrics and gynecology workers in rural china. *J Hosp Infect* 2005; 59(3): 235-41.