

//
//
//

()

*

:

()

:

:

)

(

() ()

:

:

:

:

()

(life cycle)

()

(.)

(.)

(.)

::

:

:

:

:

:

:

)

(
(sequential)

"

:

"

.()

.()

"

.()

"

"

"

()

.()

"

"

()

"

() "

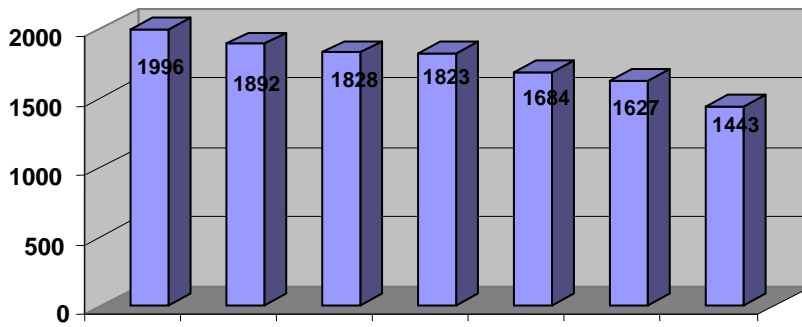
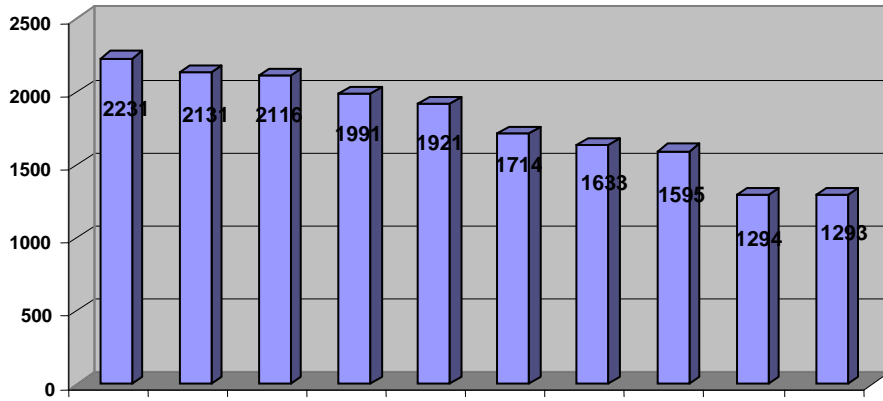
()

() "

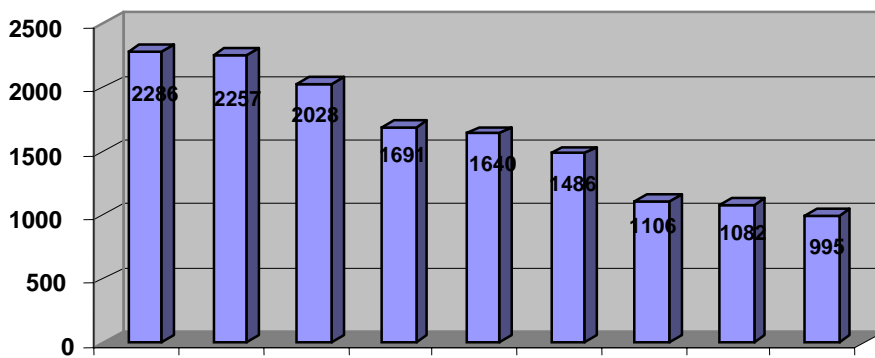
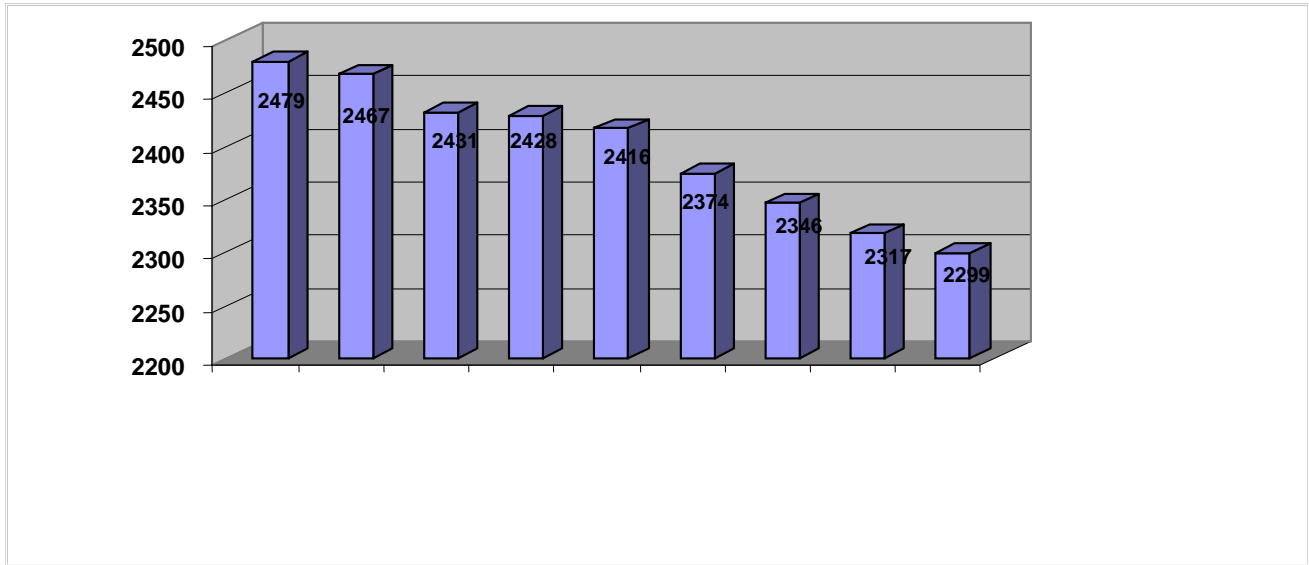
-

"

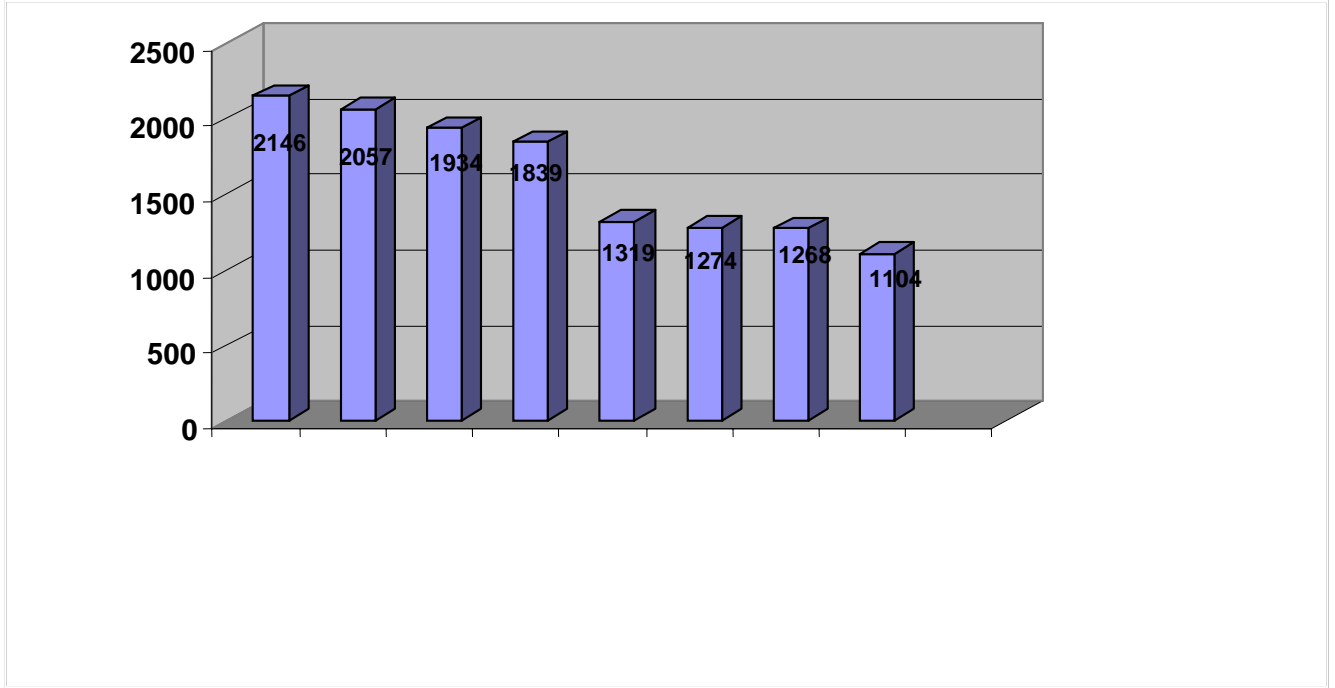
()
()



() ()



()



()

% /

% /

% /

()

% /

()

% /

()

()

()

()

()

()

()

()

%

%

: ()
 :
 :
 : % /
 % / ()
 : % /
 . () ()
 ()
 . ()
 ()

REFERENCES

1. Friedman M. Family nursing research: theory and practice. 5th ed. New Jersey: Pearson education Inc. 2003; P: 23-55.
<http://www.elib.hbi.ir> ()
5. Benson R. Biblical Principles for marriage. June 2002. Available from: <http://www.mm.aaa.net.au>.
7. Wolcott K. towards understanding the reasons for divorce. 20 June 1999. Available from: <http://www.aifs.gov.au>.
<http://www.irandoc.ac.ir> . ()
9. Lancaster J, Stanhope M. Community and public Health Nursing. 6th ed. Philadelphia: Mosby. 2000; P: 336-9.
10. Todsijevic. Mate selection criteria. 23 June 2003. Available from: http://www.human_nature.com.

-
12. Khallad Y. Mate selection in Jordan: Effects of sex, socio-economic status, and culture. *J Soc Pers Relat* 2005; 22(2): 155-68.
 13. Ross L. Differences in mate selection among African American college. Oct 2005. Available from: <http://www.quantrm2.psy.ohio-state.edu>.
 16. Sullivan KT. Understanding the relationship between religiosity and marriage. *J Fam Psychol* 2001; 15(4): 610-626.
 17. Buss D. Buss cross cultural study on mate selection. Jan 1994. Available from: <http://www.psychology.concordia.ca>.