



%

%

,%

/

%

.()

) ( )

(

.()

(... )

()

.()

()

()

( )

BMI

(N.S)

t

(NS)

/ /

%

/

(P< / )

t-test

P< /

( / )

( / )

(NS)

(P< / )



						( )
NS	/ ± /	/ ± /	/ ± /	/ ± /	/ ± /	N=
P< /	/ ± /	/ ± /	/ ± /	/ ± /	/ ± /	N=
	P< /	P< /	P< /	P< /	NS	

t

.(N.S)

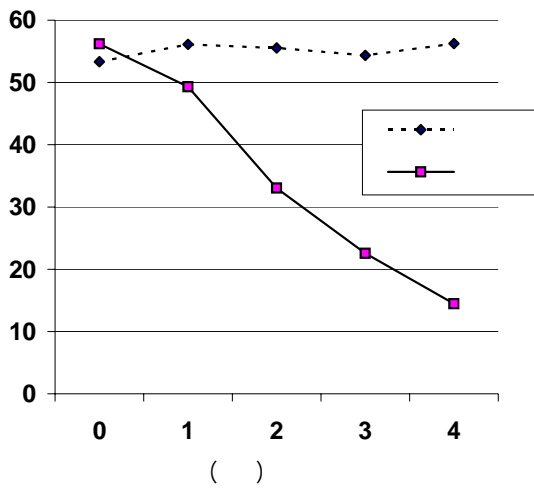
/ /

/ ± /

/ /

/ ± /

/ ± /



.(P< / )

t

.(NS)

/

( / )	( / )	( / )	
( )	( / )	( / )	(N= )
( )	( / )	( / )	
( )	( / )	( / )	(N= )

Jeffrey .

.( )

.()

Evelyn

.( )

.()

Hayrick

.()

( ).

( )

Vernhoven .( )

Cimicifuga

.( )

Climacteric  
Cheri

.( )

---

## REFERENCES

---

1. Ryan KJ, Berkowitz RS, Barbieri RL, Dunaif A. Kistner's Gynaecology and Women's Health. 7<sup>th</sup> ed. New York: Philadelphia. 1999; PP: 540-5.
2. Drife J, Magowan B. Clinical Obstetrics and Gynaecology. Edinburgh: Saunders.2004; PP:233-8.
3. Abernethy K. The Menopause and HRT. 1<sup>st</sup> ed. London: Bailliere Tindall. 1997; PP: 9-20.
4. Barbara A. Women's health initiative and acting director of the national heart, lung and blood institute. Mayo Clinic Proceeding 2004; 81: 9.
5. Berek JS. Novak's Gynaecology. 13<sup>th</sup> ed. Philadelphia. 2002; PP: 1109-33.
6. Dermarderosian A. The Review of Natural Products. 1<sup>st</sup> ed. Philadelphia: University of the Sciences in Philadelphia.
7. Tice JA, Ettinger B, Ensrud K, Wallace R, Blackwell T, Cummings SR. Phytoestrogen supplements for the treatment of hot flashes: the Isoflavone clover extract (ICE) study a randomized controlled trial. JAMA 2003; 290(2): 207-97.
8. Faure ED, Chantre P, Mares P. Effects of a standardized soy extract on hot flashes: a multicenter, double-blind, randomized, placebo-controlled study. Menopause 2002; 9(5): 329-34.
9. Heyerick A, Vervarcke S, Depypere H, Bracke M, De Keukeleire D. A first prospective, randomized, double-Blind, placebo-controlled study on the use of a standardized hop extract to alleviate menopausal discomforts. Maturitas 2006; 54: 164-75.
12. Verhoeven Mo , vander MM, vande WPH. Effect of a combination of Isoflavones and Actaea racemosa Linnaeus on climacteric symptoms in healthy symptomatic per menopausal women: a 12-week randomized placebo-controlled, double-blind study. Menopause 2005; 12(4): 412-20.
13. Van Patten CL, Olivotto IA, Chambers GK, Gelmon KA, Hislop TG, Templeton E, et al. Effect of soy phytoestrogens on hot flashes in postmenopausal women with breast cancer: a randomized, controlled clinical trial. J Clin Oncol 2002; 20(6): 1449-55.