

( )

//

//

- \*

---

:

:

( % )

*Odds Ratio*

(% / )

( $P < 0/000$ )

(% )

*III*

(CAD)

---

(CAD)

(.)

( )

CAD

HDL LDL

%

MI

( )

(Case-Control Study)

Hamilton-Norwood

%

)

(

LDL

(MI)

HDL



none

\* stage I

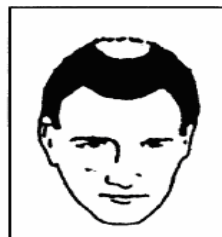
Level 0



frontal only

stage II, III, IIIa, IVa

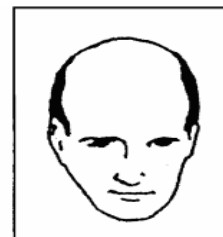
Level 1



vertex only

stage III-vertex

Level 2



frontal and vertex

stage IV, V, Va, VI, VII

Level 3

Hamilton-Norwood

LDL

MI

HDL

( )

t-test

(P = 0.2)

( )

(stage 3)

Odds ratio

(Confidence- Interval)

%

(% / )

( stage 2)

(% )

( P< / )

%

(O.R= / )

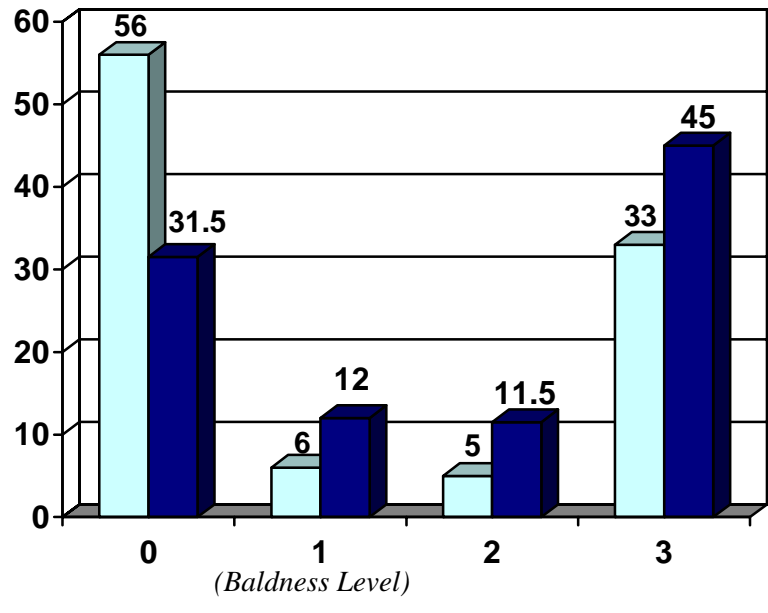
/ /

HDL (%)	LDL (%)	(%)	(%)	Mean ±SD	
( / )	( )	( / )	( )	/ ± /	( N= 200 )
( / )	( )	( )	( )	/ ±	(N=200 )

( Hamilton-Norwood Scale )


(%)	(%)	
( / )	( )	
( / )	( )	
( )	( )	

%  
% /  
% % %  
%  
%



(CAD)

( )

( / )

LDL

LDL

( )

LDL

( )

( )

HDL

.( ) (diagonal earlobe crease)

ECG

.( )

/

( )

(M )

.( )

.( )

.( )

.( )

( )

Matilainen

Practice based

( / ) (P= / ) (P= / )  
 ( / ) (P= / ) (P= / )  
 ( / ) (P= / )

( ) Matilainen  
 Population based

revascularization

( ) Lotufo

III

( )  
 ( )  
 (HDL



---

## REFERENCES

---

2. Ridker PM, Genest J, Libe P. Risk factors for atherosclerotic disease. *Heart Diseases*, Vol 1. WB Saunders 2001.
3. Vasan RS, Benjamin EJ, D'Agostino RB. The Burden of Increasing Worldwide Cardiovascular Disease. In: Fuster V, Alexander RW, O'Rourke RA, et al, editors. *Hurst's The Heart*. 11<sup>th</sup> ed. New York: Mc Graw Hill.2004; P:15-40.
4. Ellis JA, Stobbing M, Harrap SB. Male pattern baldness is not associated with established cardiovascular risk factor in general population. *Clin Sci (lond)* 2001;100:401-4.
5. Lesko SM, Rosenberg, Shapiro S. A Case-Control study of baldness in relation to myocardial infarction in men. *JAMA* 1993;269:998-1003.
6. Miric D, Fabijanic D, Giunio L, Eterovic D, Culic V, Bozic I, et al. Dermatological indicators of coronary risk: a case-control study. *Int J Cardiol* 1998;67:251-5.
7. Trevisan M, Farinara E, Krogh V, Jossa F, Giumetti D. Baldness and coronary heart disease risk factor. *J Clin Epidemiol* 1993;46:1213-8.
8. Matilainen V, Koskela P, Keinanen-Kiukaanniemi S. Early androgenetic alopecia as a marker of insulin resistance. *Lancet* 2000;356:1165-6.
9. Lotufo PA, Chae CU, Ajane UA, Hennekens CH, Manson JE. Male pattern baldness and coronary heart disease. *Arch Intern Med* 2000;160:165-71.
10. Matilainen VA, Makinen PK, Keinanen-Kiukaanniemi SM. Early onset of androgenic alopecia associated with early severe coronary heart disease: a population- based case-control study. *J Cardiovasc Risk* 2001;8:147-51.
11. Ben Halim MM, Meyrick G, jeans WD, Murphy D, Burton JL. Myocardial infarction, androgen and the skin. *Br J Dermatol* 1978;98:63-8.
12. Sasmaz S, Senol M, Ozcan A, Dogan G, Tuncer C, Akyol O, et al. The risk of coronary heart disease in men with androgenic alopecia. *J Eur Acad Dermatol Venerol* 1999;12:123-5.