

( )

//  
//  
//

\*

*Stomacher*

*BPW*

*ml*

*RV ml*

*/ ml*

*HE*

*(% / )*

*(% / )*

*(% / ) S. thompson*

*% /*

*% /*

( )

)

(

( )

(CDC)

( )

(food borne diseases)

( )

( )

( )

HACCP

( )

% / % / % / % /

( ) % / % /

( )

( )

( )

( )

-

( mcg) ( mcg)  
 ( mcg) ( mcg) ( ) (ISO 6579)  
 ( mcg) ( mcg) gr  
 ( mcg) ( mcg) ml (Stomacher)  
 ( mcg) ( mcg) (BPW. Merck)  
 ( mcg) ( mcg)

Stomacher (Seward 400)

/ ml °C

ml

Rappaport-Vassiliadis Broth (RV. Merck)

°C

(% / )

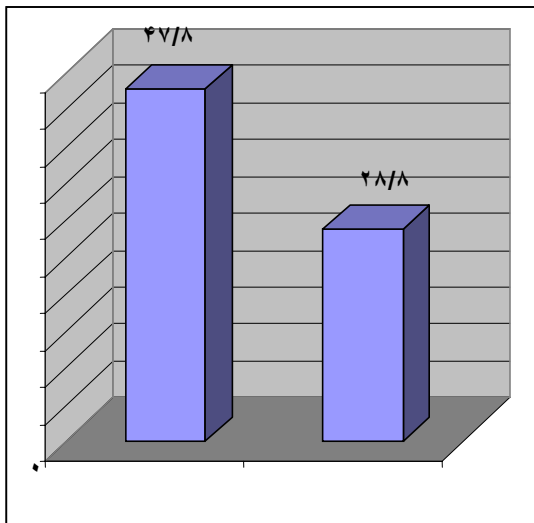
(% / )

( )

(% / )

(HE. Merck)

°C



Disk Diffusion

( )

(Heart Infusion Broth. Difco)

°C

Heart Infusion Broth

/

(% / ) *S. enteritidis* (% / ) *S. thompson*

(Hi Media)

(% / ) *S. paratyphi C*

% /

( mcg)

:

(*S. untypable*)

( )

( )

( )

- S.thompson
- S.paratyphi C
- S.meleagridis
- S.enteritidis
- S.virginia
- S.group II
- S.haardt
- S.anatum
- S.veyle
- S.typhimurium
- S.untypable

S (%)	I (%)	R (%)
( / )		( / )
( / )	( / )	( / )
( / )	( / )	( / )
( / )	( / )	( )
( / )		( / )
( / )		( / )
( )		
( )		
( )		
( )		
( )		
( )		
( )		
( )		
( )		
( )		

S (%)	I (%)	R (%)
( / )	( / )	( / )
( / )	( / )	( )
( / )		( / )
( / )	( / )	( / )
( )		
( )		
( )		
( )		
( )		
( )		
( )		
( )		
( )		
( )		
( )		
( )		

S.meleagridis S.paratyphie C S.thompson  
 S.haardt S.groupII S.virginia S.enteritidis ( / )% /  
 S.typhimurium S.veyle S.anatum  
 S.thompson  
 (P= / )  
 pH  
 pH  
 ( )  
 S.haardt S.enteritidis  
 S.typhimurium S.virchow S.newport  
 ( ) S.heidelberg ( / )% /  
 S.galinarom S.pulorum (% / ) (% / )  
 ( ) S.cholorasuis S.typhi ( ) (% / )  
 S.anatum % /  
 S.meleagridis % / ( )  
 ( )  
 Luu  
 S.haardt S.enteritidis % / Stevens  
 S.anatum %  
 S.meleagridis % / % /  
 S.meleagridis S.anatum ( )  
 S.enteritidis

( ) % /

% / % / ) ( )

% %

% / (

%

( )

( )

## **REFERENCES**

1. Todd EC. Epidemiology of foodborne disease, a worldwide review. World Health State O. 1997;50:30-50.
2. O'osterom J. Epidemiological studies and proposed preventive measures in the fight against human Salmonellosis. Int J Food Microbiol 1991;21:779-89.
3. Acha. PN and Szyfree B. Zoonoses and communicable diseases common to man and animals. 3<sup>rd</sup> ed. Washington DC: Pan American Health Organisation. 2001; P:233-46.
4. Health Protection Agency, Centre for Infections. Communicable Disease and health protection quarterly reviews: January to March 2005. J Public Health 2006;27(3):303-7.
5. Bean NH, Griffin PM. Foodborne disease outbreaks in United States 1973-1987: pathogens, vehicles and trends. J Food Prot 1990;53:804-7.
6. White PL, Naugle AL, Jackson CR, Fedorka-Cray PJ, Rose BE. *Salmonella enteritidis* in meat, poultry, and pasteurized egg products regulated by the U.S. Food Safety and Inspection Service, 1998 through 2003; J Food Prot. 2007 Mar;70(3):582-91.

- 
7. D' Aoust JY. *Salmonella* and the international food trade. Int J Food Microbiol 1994;24:11-31.
  8. Wray C, Davies RH. *Salmonella* infections in cattle, in *Salmonella* in domestic animals. Oxon, England; Wray C & Wray A, CAB International. 2000; P:169-190.
  9. Bryan FL, Doyle MP. Health risks and consequences of *Salmonella* and *Campylobacter jejuni* in raw poultry. J Food Prot 1995;58:326-44.
  10. Adesiyon AA and Oni OO. Prevalence and antibiograms of *salmonella* in slaughtered cattle, slaughter areas and effluents in Zaria abattoirs, Nigeria; J.Food.Prot 1989; 52:232-235.
  11. Roof MB, Doitchinoff DD. Safety, efficacy, and duration of immunity induced in swine by use of an avirulent live *Salmonella choleraesuis*-containing vaccine. Am J Vet Res 1995;56(1):39-44.
  12. Campo P. Evaluation of susceptibility of *non-typhi Salmonella* in a Spanish hospital (1992-1994) and report *Salmonella* serotype typhimurium isolate resistant to quinolones. Eur J Epidemiol 1997;13:239-41.
  13. Molla B, Alemayehu D, Salah W. Sources and distribution of *Salmonella* serotypes isolated from food animals, slaughterhouse personnel and retail meat products in Ethiopia.1997-2002. Ethiop J Health Dev 2003;17(1):63-70.
  14. Tauxe RV. *Salmonella*: a postmodern pathogen. J Food Prot 1991;54:563-8.
  15. Glynn MY, Bopp C, Dewitt W, Dabney P, Mokhtar M, Angulo FJ. Emergence of multidrug-resistant *Salmonella enterica* serotype typhimurium DT104 infections in the United States. N Engl J Med 1998;338(19):1333-8.
  16. Van Duijkeren E, Houwers DJ. A critical assessment of antimicrobial treatment in uncomplicated *Salmonella enteritidis*. Vet Microbiol 2000;73:61-75.
  17. Angkitittrakul S, Chomvarin C, Chaita T, Kanistanon K, Waethewutajarn S. Epidemiology of antimicrobial resistance in *Salmonella* isolated from pork, chicken meat and humans in Thailand. Southeast Asian J Trop Med Public Health 2005;36(6):1510-5.
  18. Wegner HC, Arestrup FM, Gerner- Smidt P. Transfer of antibiotic resistant bacteria from animal to man. Acta Vet Scand 1999;92:51-7.
  19. Molla B, Mesfin A. Alemayehu D. Multiple antimicrobial-resistant *Salmonella* serotypes isolated from chicken carcass and giblets in Debre Zeit and Addis Ababa, Ethiopia. Ethiop J Health Dev 2003;17(2):131-49.
  20. Bohaychuk VM, Gensler GE, King RK, Manninen KI, Sorensen O. Occurrence of pathogens in raw and ready-to-eat meat and poultry products collected from the retail marketplace in Edmonton, Alberta, Canada. J Food Prot 2006;69(9):2176-82.
  21. ISO/ CD 6579 – Microbiology of food and animal feeding stuffs – Horizontal method for the detection of *Salmonella*. 1993. (Revision of ISO 6579: 1993).
  22. www.cdc.gov/lab/disk diff.htm, Disk Diffusion Susceptibility Testing .2007
  23. Jay James M. Modern Food Microbiology, 6<sup>th</sup> ed. Aspen publisher. 2000.

24. Maharjan M, Joshi V, Joshi DD, Manandhar P. Prevalence of *Salmonella* species in various raw meat samples of a local market in Kathmandu. *Ann N Y Acad Sci* 2006;1081: 249-56.
25. Ha TA, Pham TY. Study of *Salmonella*, *Campylobacter*, and *Escherichia coli* contamination in raw food available in factories, schools, and hospital canteens in Hanoi, Vietnam. *Ann N Y Acad Sci* 2006;1081:262-5.
26. Stevens A, Kaboré Y, Perrier-Gros-Claude JD, Millemann Y, Brisabois A, Catteau M, et al. Prevalence and antibiotic-resistance of *Salmonella* isolated from beef sampled from the slaughterhouse and from retailers in Dakar (Senegal). *Int J Food Microbiol* 2006;110(2):178-86.
27. Luu QH, Fries R, Padungtod P, Tran TH, Kyule MN, Baumann MP, et al. Prevalence of *Salmonella* in retail chicken meat in Hanoi, Vietnam. *Ann N Y Acad Sci* 2006;1081:257-61.
28. Carraminana JJ, Rota C, Augutin I, Herrera A. High prevalence of multiple resistance to antibiotics in *Salmonella serovars* isolated from poultry slaughterhouse in Spain. *Vet Microbiol* 2004;104(1-2):133-9.
29. White PL, Naugle AL, Jackson CR, Fedorka-Cray PJ, Rose BE, Pritchard KM, et al. *Salmonella enteritidis* in meat, poultry, and pasteurized egg products regulated by the U.S. Food Safety and Inspection Service, 1998 through 2003. *J Food Protec* 2007;70(3):582-91.
30. Gay JM, Rice DH, Steiger JH. Prevalence of faecal *Salmonella* shedding by cull dairy cattle marketed in Washington State. *J Food Prot* 1994;7:195-7.