

()

//
//

*

:

:

()

() ()

Mann-Whitney

Freedman

:

$(P < /)$

:

:

(Menastil)

.()

()

.()

%

.()

%

Mathiol

.()

()

Berek %

%

.()

.()

%

%

()

%

.()

% /

.()

.()

% /

.()

)

()

BMI

.()

(

()

()

) A

SPSS 10

) B

(

Freedman Paired T-test Wilcoxon

/

Mann-Whitney U

Clear Ellen

P < /

(

()

%

%

%

()

.()

(%)

P < /

/ ± /

/ ± /

P = /	/ ± /	/ ± /
P = /	/ ± /	/ ± /
P = /	/ ± /	/ ± /
P = /	/ ± /	/ ± /
P = /	() /	/
P = /	% /	% /
P = /	% /	% /
P = /	% /	% /
P = /	% /	% /
P = /	()% /	()% /
P = /	% /	/

()	()	()	()	()	()
(/)	(/)	(/)	(/)	(/)	(/)
(/)	(/)	(/)	(/)	(/)	(/)
(/)	(/)	(/)	(/)	(/)	(/)
()	()	()	()	()	()

1 ± 1 1 ± 1 1 ± 1
 1 ± 1 1 ± 1
 1 ± 1 1 ± 1

1

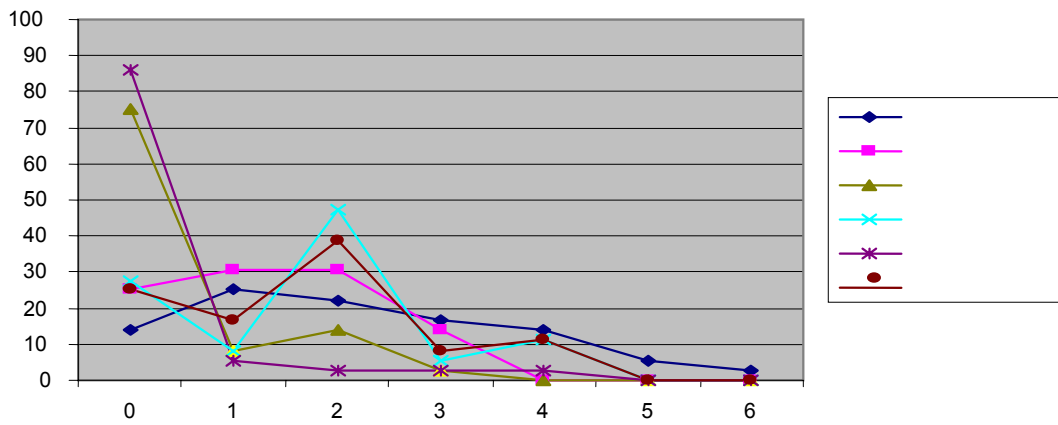
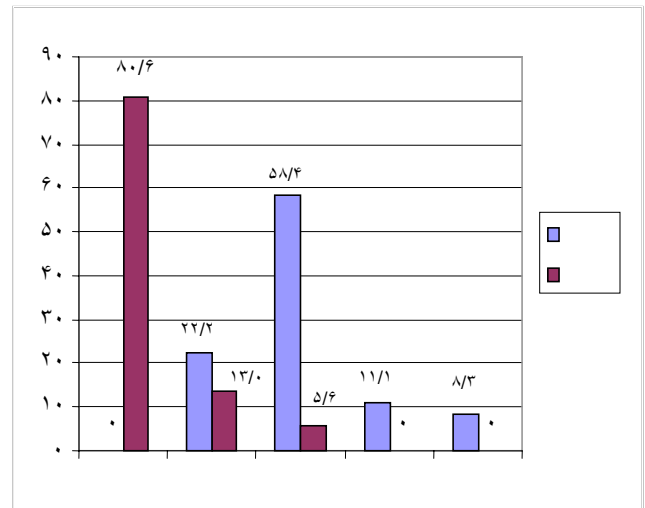
(P = 1)

(P < 1)

% / % /

% %

% % /



)
 (% / .
 % / % /
 % /

% /
 . (P= / , P = /) .
 % /
 % /
 % /

% / (P= /)
 % /

(%)	(%)	(%)
(/)	(/)	
(/)		
(/)	(/)	(/)
(/)	-	(/)

/ ± / / ± /
 / ± / / ± /
 / ± / / ± /
 . (P= /)
 ()
 (P= /)
 ()

.()

() Blum

%

. % /

Blum

Blum

) ε

(

REFERENCES

1. Beckmann CRB, Ling FW, Smith RP, Barzansky BM. Obstetrics and Gynecology. 4th ed. Philadelphia: Lippincott Williams & Wilkins. 2004; P:407-15.
2. Drife J, Magowan B. Clinical Obstetrics & Gynecology. Edinburg: Saunders. 2004; P:213-5.
3. Scott JR, Gibbs RS, Karlan BY, Haney AF. Danforth's Obstetrics and Gynecology. 9th ed. Philadelphia: Lippincott Williams & Wilkins. 2003; P:678-87.

-
4. Berek J, Novak's Gynecology. 13th edition. Philadelphia: Lippincott Williams & Wilkins. 2002; P:431-50.
 6. Speroff L, Frit MA. Clinical Gynecologic Endocrinology and Infertility. 7th ed. Philadelphia: Lippincott Williams & Wilkins. 2005; P:531-70.
 7. Howard FM, Perry CP, Carter JE. Pelvic Pain: Diagnosis & Management. 1st ed. Philadelphia: Lippincott Williams & Wilkins. 2000; P:100-7.
 8. Gordley LB, Lemasters G, Simpsons SR, Yiin JH. Menstrual disorders and occupational, stress, and racial factors among military personnel. *J Occup Environ Med* 2000;42(9):871-81.
 9. Ryan K, Berkowitz RS, Barbieri RL. Kistner's Gynecology & Women's Health .6th ed. St.Louis: Mosby 1999; P:620-5.
 10. Miriam S. Family Health Guide .1st ed. New York. 2002; P:247-9.
 11. Ross Sm. An Integrative approaches to eczema (atopic dermatitis). *Holist Nurs Pract* 2003;17(1):56-62.
 13. Blum M. Clinical Trial effective Menastil on Primary dysmenorrhea. Canada. 2002;P:1-10.
 14. Blumenthal M, Goldberg A, Brinckmann J. Herbal Medicine. 1st ed. Expanded Commission E Monographs. Austin American. 2000; P: 138-42.
 16. Greunwald J, Brendler T, Jaenicke C. PDR for Herbal Medicine. 2nd ed. Medical Economics. Mont vale Company. 2000; P:500-10.
 18. Dermaderosian A, Liberti L. The review of natural products .1st ed. Wolters Kluwer Company. 2001; PP:110-2.